



# Installation & Maintenance Instructions



## **F** FLOATING





## Installation & Maintenance Instructions

### **F** FLOATING

We congratulate you for making the decision to purchase this high-quality product. This guide will help you install your new CORKART floor quick and easily.

#### Floating Floor with a Strong Click System & a Superior Quality Floating Structure.



AUTHENTIC LOOK



OK RADIANT HEATING



EXTRA WARMTH & COMFORTABLE



RESISTANT



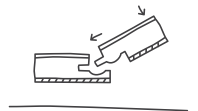
EASY TO INSTALL



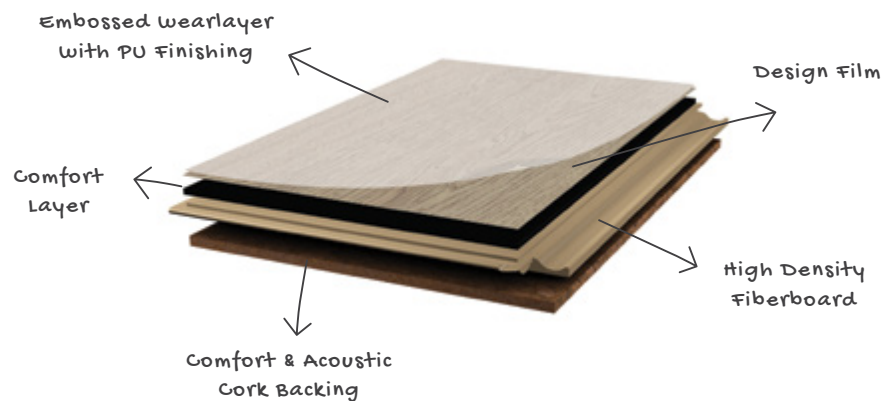
SOUND REDUCTION

### **F** FLOATING

UNICLIC®



Maximum Comfort and Acoustic & Thermal Properties with an Extra Cork Backing



### SUITABILITY

CORKART floors are engineered for being installed exclusively indoors.

Our CORKART FLOATING Floor uses the patented UNICLIC®. It is a revolutionary system to install floors without using glue. It uses an ingenious form of tongue and groove to click the planks together.

The CORKART floor can be installed on a range of hard, flat, and cleaned non-deformable screed/subfloors, such as:

- Concrete
- Sand Cement
- Ceramic tiles
- Linoleum
- PVC tiles
- Anhydrite
- Wood, particle board and MDF
- Magnesite

Installation is NOT allowed over any type of carpet. Soft floors MUST be removed before installation.

### **Underfloor Heating**

CORKART flooring can be use with electric floor heating only under exclusive circumstances, described below:

- heating is incorporated into a 15mm screed or leveling layer or has an on/off switch instead of a continuous system.

CORKART flooring is suitable for hydraulic floor heating.

In both cases, the surface temperature must not exceed 27 °C.

### **Water Resistance & Moisture**

Corkart floating floors are NOT waterproof and are not recommended for damp or steady rooms such as toilets or kitchens, shower rooms, sauna, swimming pool or other rooms exposed to excessive water & moisture.

When properly installed this product can be exposed to water spills, however, it should be cleaned immediately otherwise it can cause swelling, dripping or cracking. This product is not designed to withstand water and moisture and should not be applied over a subfloor with a history of high moisture or hydrostatic conditions.

When the subfloor has a history of high moisture, or when a water submersion or a flooding occur, the product most likely will get ruined and the water that remains underneath the floor can create conditions for growing fungus, mold or smell, discouraged for hygienic and healthy reasons.

### **Sunlight Exposure**

CORKART FLOATING can be installed under windows or glassed doors. However, some fading and discoloration can occur with direct sunlight. Preventive measures should be considered. See detailed information in Sunlight Exposure, p. 15.

## Size of Installation (Limit)

Corkart Floating floor is suitable for areas up to 80m<sup>2</sup> without joints (10x8m). If exceed this area, the use of space joints is mandatory, between different room areas or in the same, to ensure the floor can expand unhindered. This requirement also applies if there are substantial variations in temperature and humidity between different room areas.

## Ideal Temperature / Humidity Conditions of the Installation Area

Temperature: between 18°C and 27°C (64°F and 80°F)

Humidity: between 30% and 60%

## Expansion Joints

A standard perimeter expansion joint of not less than 10mm must be maintained against all fixed vertical surfaces (e.g. walls, cabinets, sliding doors, island benches, plumbing fixtures etc.).

Large objects such as kitchen island should not be placed on a floating floor. The flooring needs to be installed around the perimeter of the kitchen island or under the kick boards / fascia to allow for natural floor movement. As such, kitchen island should be assembled prior to install.

## READ THESE INSTRUCTIONS THOROUGHLY BEFORE BEGINNING INSTALLATION.

To ensure you will enjoy your CORKART flooring for a long time, please follow carefully the installation instructions.

## PLANNING THE FLOOR INSTALLATION

### Installer/Owner Responsibility

You should always add 5% to 10% cutting allowance to the actual square footage amount needed for regular installation waste.

We urge you to always inspect and confirm the perfect condition of the goods delivered PRIOR to installation.

Planks that show defects should not be used and you should stop work immediately and inform your dealer (duty to inspect and care). Goods already placed or cut are excluded from claims for damages and exchanges. Manufacturer declines responsibility for any costs incurred when plank(s) with visible defects have already been installed.

CORKART FLOATING flooring have a wood or natural stone look. The boards are deliberately structured and different and there may be small color and structure variations between the sample and the material produced. Small differences in color and structure, even within a package, are therefore not grounds for complaints, but should emphasize the authenticity of appearance.

For best visual effect and a balanced installation, use planks from several cartons. We recommend to mix them & plan the layout prior to placement (open 3-4 packages).

## Conditioning

Before starting the installation of the CORKART floor, the packages should be stored closed, horizontally and in small piles (lying down) in the room where the floor will be placed later, for at least 48 hours.

CORKART flooring is best installed at a comfortable room temperature of 18 °C-23 °. If the conditions at the time of installation are extreme, it has implications on the maximum size limit for installation without joints.

## PRE-INSTALLATION JOBSITE REQUIREMENTS

The first thing to do when installing a vinyl floor is to thoroughly inspect the existing floor.

### 1) SUBFLOORS & FLOOR PREPARATION

#### Subfloor Requirements

Subfloors shall be smooth, dry, clean, and free from grease and chemical substances. The surface must be hard and dense, free from powder or flaking & variations should not exceed 3mm each 3 meters.

Is recommended to remove old skirtings and install new ones after the floor installation.

Use a moisture meter and keep track of the moisture content. The maximum residual moisture permitted as a percentage of the screed is:

- <0.5% CM anhydrite subfloor
- <0.2% anhydrite subfloor with underfloor heating
- <2.5% sand cement / concrete screed
- <1.5% sand cement with underfloor heating
- <14% wood in MDF

Corkart does **NOT** warrant nor is responsible for damage to floor covering due to moisture related issues.

#### A. INSTALLATION OVER WOOD SUBFLOORS

Do not install material over wood subfloors that lay directly on concrete or over dimensional lumber or plywood used over concrete. Wood will rot after time because the moist is blocked by the new flooring and underlay.

Corkart floors can be installed over wood that are not applied over concrete. In this case **DO NOT** apply PE sheet over wood subfloors.

Check for any traces of mold and/or insect infestations.

## B. INSTALLATION OVER CONCRETE SUBFLOORS



Prepare the subfloor before installation. Any bumps or irregularities in the subfloor should be fixed to avoid causing problems later in the process. If necessary, scrape of and clean up old adhesives prior to installation.

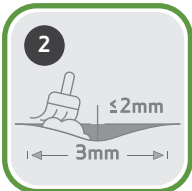
Concrete slabs must be dry with no visible moisture. Do not install over concrete with a history of high moisture or hydrostatic conditions. Excessive moisture in the subfloor could promote mold, mildew, and other moisture related issues like the trapping of moisture emissions under the flooring, which may contribute to an unhealthy indoor environment.

Corkart does **NOT** warrant nor is responsible for damage to floor covering due to moisture related issues.

## C. INSTALLATION OVER OTHER EXISTING FLOOR COVERINGS

Flooring can be installed over most existing hard-surface floor coverings, provided that the existing floor surface is fully adhered, clean, flat, dry, structurally sound and free of deflection.

Existing sheet vinyl floors should not be heavily cushioned and not exceed more than one layer in thickness.



This product can be installed over existing ceramic/porcelain tile floors when joints are not deeper than 2mm or wider than 3mm and no tiles or edges are protruding upwards. If the grout joint exceeds the 3mm, a cementitious patching compound should be used to fill the grout joint to make it smooth with the surface of the tile.

## 2) TOOLS AND ACCESSORIES

- Tape Measure
- Moisture Meter (wood / concrete)
- Pencil
- Circular or Hand Saw
- Pull Bar
- Safety Equipment (Goggles & Mask)
- Utility Knife
- Distance Spacers
- Broom
- Polyethylene sheet (PE sheet)
- Taping block
- Rubber hammer

### 3) INSTALLATION INSTRUCTIONS

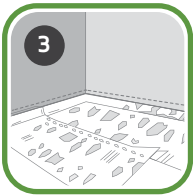
CORKART products are intended to be installed as a floating flooring and must be able to expand and contract freely in response to changes in temperature. Corkart FLOATING floors must not be glued, nailed or fixed to the screed or to walls or any other part of the building.

Simple junction of every unit through the unglued system makes it very simple and clean to use.

#### Vapor Barrier (PE Sheet)

We recommend the use of a vapor barrier (PE sheet) with at least 0,2 mm thick under the CORKART floor, unless installation is over a wood subfloor.

A PE sheet is recommended for health and hygiene reasons, especially when installed directly on concrete floor. It works as a barrier to prevent humidity and to avoid contact with mold and any existent substances on the sub-floors. CORKART will not be responsible for the degradation of the product in the case of non-use of the PE sheet.



Lay the PE Sheet. Allow the edges of the film to overlap about 20 cm and glue with tape. On the walls, the film should be about 3 cm high, which will be covered by any skirting installation.

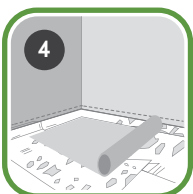
#### Floor Underlayment

Your CORKART floating floor has an integrated high density cork backing (underlay).

A cork floor underlay helps significantly in the acoustic & thermal performance and has comfort-enhancing properties, it prevents gritting and avoid damaging the material.

Cork is natural, reduces and absorbed the moisture of condensation, preventing the degradation of the floor covering and the subfloor.

If you want extra acoustic and thermal comfort, you can choose to place an extra underlay. In this case:



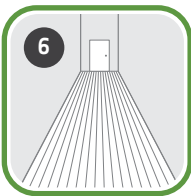
Cut and install the underlayment the closer possible to the wall and stick on the transitions with a tape to avoid the underlayment to move.

## Floor Installation

After making sure subfloor is ready (see Subfloor Preparation) and vapor barrier (PE sheet) is correctly installed (unless installation is over a wood subfloor), you are ready to start your CORKART floor Installation.

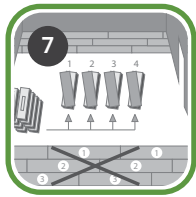
Always ensure an ideal working light during installation. An evening installation is not recommended.

## Installation Layouts



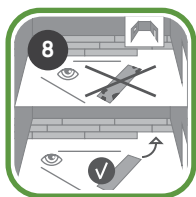
We recommend beginning the installation in the longest wall of the room ideally parallel to the incoming sunlight source or the longest wall of the room.

## Plank Mixing



For best visual effect use planks from several cartons. We recommend to plan a precise layout. See planks in detail and mix them prior to placement (open 3-4 packages). Also make sure that the end joints of the planks in 2 successive rows are never in line, they should be staggered by at least 300mm.

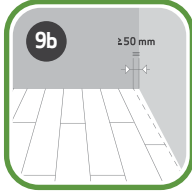
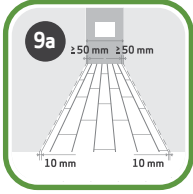
## Check for Defective Planks



Inspect all planks for proper color, finish and style, and confirm the perfect condition of the goods delivered PRIOR to installation. If you find planks that show defects do not use them and inform your dealer (duty to inspect and care).



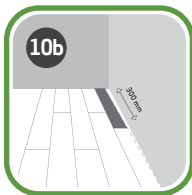
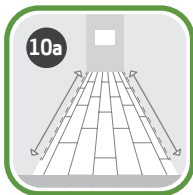
## First Plank Row, Parallel Towards the Wall



Measure the width of the room, and then divide the room's width by the width of the plank. If the last row of planks will be narrower than 50 mm, you will need to cut the first row of planks to make it narrower. Make a simple drawing tool (piece of wood or plank) and mark the plank along the wall. Cut the planks lengthwise including the flexible tongues.

Cut in such a way that both rows of planks (the first and last to be installed in the room) will have the same approximate width for an overall continuous look (see Last Row section).

## Measure the Length of the Room



Measure the length of the room, and then divide the room's length by the length of the plank. If this means that the last plank to fit will be narrower than 300 mm, then you will need to cut the first plank to make it shorter.

## First Plank, First Row



Begin the installation of the planks in the down right-hand corner of the room. The first plank should be placed with the tongue side towards the wall.

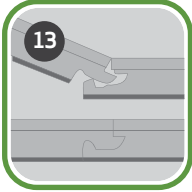
## Expansion Joints



A joint of at least 10 mm is always required between the CORKART floor and the wall, as well as all fixed components, such as heating pipes and door frames. To ensure a perfect expansion joint, the tongues against the wall need to be sawn off.

It is essential that the floor can expand and contract without any obstacle. Adjacent areas, with very different temperatures, must be separated by an expansion joint.

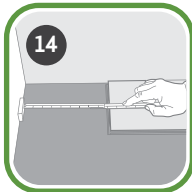
### Second Plank, First Row



Always attach the tongue (male) of one plank to the groove (female) side of another plank. Position the plank to be installed at an angle of 20-30 degrees to the planks already installed. Move the plank up and down exerting forward pressure at the same time. The planks will then click snugly together. Complete the first row in the same way.

Installing glueless “click” floating floor will require slightly more pressure than glued floating systems.

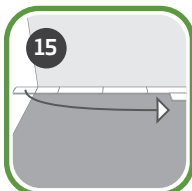
### First Row, Last Plank



At the end of the first row, put a spacer to the wall and confirm the length of the last plank to fit. The minimum length of the plank should be 300 mm and should be shortened accordingly.

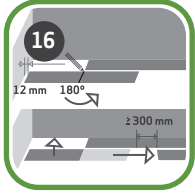
Make sure that all planks are perfectly aligned to one another. It is extremely important for installing the next rows.

### Second Row, First Plank



Second Row, First plank min length > 300 mm. Put a spacer against the left wall.

## Offset Installation



Pay attention to staggered joint distance. Minimum distance between short ends of planks in parallel rows shall not be less than the given length.

**NEXT ROWS:** If the cut-off piece from the previous row is more than 300 mm you can use it. If not, use a new plank, which has to be cut in the middle.

Use the same technique until the first two rows are fully installed. Now push the whole unit against the wall and fill in the expansion joint (+/- 1 cm), using spacer blocks.

## Second Row, First Plank



Firmly holding Row 1 in place. Position the long side of the plank to be installed at an angle of 20-30 degrees to the planks already installed. Move the plank up and down exerting forward pressure at the same time.

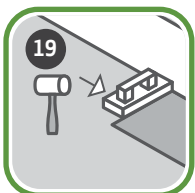
## Second Row, Second Plank



Push to slide the plank against the row in front so it aligns with the first plank. Put it down like the first plank positioned tightly together. The first/previous plank can now be folded completely down to horizontal position and if a wedge is used it can be moved to the next short end joint.

Take another plank and fit it into the groove of one on the previous row leaving a space of at least 1 cm from the short side of the previous plank.

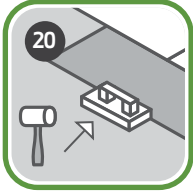
## Second Row



Use the tapping block on the long edge to help achieving the proper locking of the planks. Tap it until the short edges of the first two planks of the second row fit together.

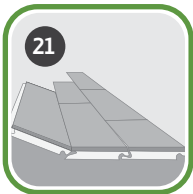
Install the third plank of the second row.

## Second Row On



From second row on we recommend the use of a proper tapping block and rubber hammer both vertically and horizontally to assure planks lock snugly together.

On the long side and when the planks cannot be rotated into one another or its too difficult to install, you can pull them together using the pull bar and a hammer.



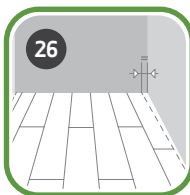
After 2-3 rows.  
Adjust the distance to the front wall by placing space blocks. Keep them in position during the entire time of installation and remove once the installation is completed.



Ensure that the end joints of the planks in 2 successive rows are never in line, they should be staggered by at least 300mm.

## Last Row

Usually the last row requires all planks be cut lengthwise.



Last row should be minimum width 50 mm. Place a spacer to the wall before measuring. Make a simple drawing tool (piece of wood) and mark the plank along the wall. Cut the planks lengthwise including the flexible tongues.

## Skirting Boards



After removing all spacer blocks fix the skirting boards over the extended vapor barrier (PE sheet). Remember you need to allow the floor to expand and contract beneath the skirting board, so never fix it to the floor itself but rather on the wall.

Leave about 0,1mm, equivalent to one sheet of paper, away from the floor. This way the floor can expand and contract correctly.

One of the major benefits of using the UNICLIC® system is that you can immediately walk on the floor after installation.

### Other recommendations

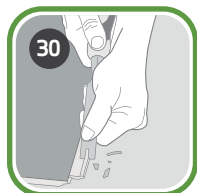
Please be aware of the following recommendations when installing your Corkart floor.

- Installation around radiator/heating pipes



Drill holes two times larger than the diameter of the pipes. Remove a piece of the plank with a utility knife. Put the plank on one side of the pipes and the removed piece on the other side.

- When angling is not possible



Remove the vertical locking part of the strip with a chisel, put applicable glue on the strip and push the planks horizontally together. Place some spacers against the wall.

## Dismantling planks



Separate the whole row by carefully lifting up and release the whole row.  
Fold up the row and release the whole long side.  
Put the plank on one side of the pipes and the removed piece on the other side.



Disassemble the planks by angling the short sides up vertically.

## PREVENTIVE AND MAINTENANCE TIPS

### General care and maintenance

To maintain your floor in excellent conditions you can follow certain procedures:

- Avoid excessive humidity on the floor
- Do not allow water to stay on the joints for long periods
- Use doormats outside each entrance to your home to prevent dirt, sand, grit and other substances from being tracked onto your floor.
- Use non-staining mats on your floor. Do not put rubber-backed, latex-backed or coco fiber mats on your floor because they will stain or damage the surface.
- Support furniture with wide-bearing, non-staining floor protectors to avoid scratches. Ideally, the protectors should be at least 25mm in diameter, made of non-pigmented hard plastic, and rest flat on the floor. Non-staining felt protectors are also acceptable.
- Use protection mats under chairs with caster in order to avoid abrasion of the vinyl flooring. Make sure that any metal protectors are rust-proof.
- If you need to move heavy furniture and/or appliances across the floor, always use strips of wood, plywood, or hardboard runways to protect the floor.
- Always use runways even if you have an appliance dolly, or even if the heavy objects are equipped with wheels or rollers.

## Cleaning

Proper care and cleaning are an important part of maintenance.

Sweep or vacuum floor frequently to keep your floor clean and in order to avoid buildup of abrasive particles. Dust and dirt behave like sanding paper and its important to be removed.

Cleaning should be done with a damp mop, using neutral products. Do not use aggressive agents and / or solvents or contain glycerin.

Sweep your flooring regularly with a damp cloth and PH neutral at least once a week. Prevent stains by wiping up spills promptly.

Wet maintenance is entirely forbidden.

## Sunlight exposure

Vinyl flooring may change colour when exposed to sunlight. It is important to protect the floor from exposure to direct sunlight to avoid fading and discolorations. We recommend using curtains or other systems of UV screening and to close your curtains or blinds where extreme sunlight hits the floor to minimize the effect of sun exposure.

## Maintenance

Maintenance caring is recommended from time to time to refresh the protective layer. First clean your floor and then apply a thin layer or a recommended maintenance product.

## IMPORTANT NOTES

Our written technical advice is based on tests but is only a non-binding indication and does not exempt you from the testing of the products provided by us for its suitability to the intended procedures and purposes. The installation use and processing of the products are beyond our control and, therefore, are your sole responsibility.

Thanks to the secure patented UNICLIC® system of our Floating Corkart flooring, installation is easier and costs are drastically reduced ensuring same-day walk-on.

**We hope you enjoy your CORKART floor!**  
**For further information or concerns please contact your dealer.**